

25 for '25

25 TRAIL PROJECTS FOR A HEALTHY COMMUNITY

Kershaw County



KC TRAILS

RUN • WALK • BIKE • PADDLE

25 Trail Projects for a Healthy Community



KC TRAILS

RUN • WALK • BIKE • PADDLE

Since being established in 2019, KC Trails has been promoting the development and use of outdoor trails for running, walking, bicycling, and paddling. Our goal is to get people outside to exercise.

Recent studies have shown that the benefits of outdoor exercise include improved concentration and working memory, reduced blood pressure, enhanced mental well-being, and decreased stress and fatigue, while also boosting overall physical fitness.

This publication reports on 25 projects to expand trails and outdoor activity in Kershaw County. Some of these are very large projects that will take many years to complete, and some are simple projects that can be accomplished in a short timeframe. Some of these projects are already underway, and others just an idea.

The purpose of this list is to inform the public of the many efforts that are underway, and to get people dreaming about the future.

Our #1 project for 2025 is to promote expansion of the Kershaw County School Board's policy of Open Community Use of Schools for Exercise. Currently, community use is only allowed at the elementary schools, and we are asking for it to be expanded to middle and high schools. Our cover photo is the nature trail at Doby's Mill Elementary School. Teachers use the trail for classwork and exercise, and parents use the trail for exercise throughout the day.

- KC Trails



www.kctrails.org

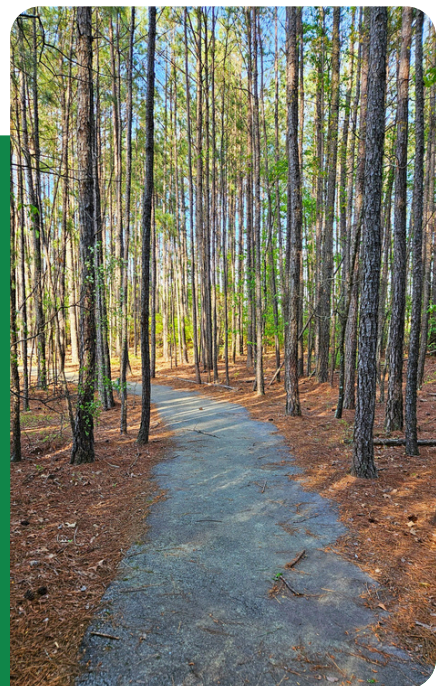


@kctrails

1

Expand Open Community Use of Schools for Exercise

Open Community Use, allowing free community access to our schools' outdoor recreational facilities, is an effective and affordable strategy to combating obesity and increasing physical activity. In 2014, the South Carolina School Boards Association recommended all school districts adopt the Open Community Use policy. In Kershaw County, Community Use has been allowed for elementary, but is not currently approved for middle and high schools. KC Trails is advocating for adoption of Open Community Use for all schools in the county, and increased outdoor exercise for students.





2

Nature as Teacher - Increase public access

Nature as Teacher is an 800 acre property on the Wateree River owned by Clemson and dedicated to provide outdoor education experiences for all ages by facilitating and supporting nature focused programs and practices in order to foster relationships with nature. The Nature as Teacher Preserve is currently opened to the public one Saturday per month from May through November. KC Trails is looking for organizations that can support the cost of weekend staffing for the Preserve so that it can be opened to the public more often.

3

North Central Middle and Elementary Schools - 1.5 mile Trail

KC Trails has been working with the principals at North Central Middle and Elementary Schools to develop a 1.5 mile trail around the perimeter of the property. The trail will connect to the High School trail across the street which is 1.2 miles long.

4

Kirkwood Inn Ruins - Kirkwood Hotel property to polo field

The South Carolina Battleground Preservation Trust acquired the Camden Polo Field and the adjoining Kirkwood Inn property, and the property is now managed by Historic Camden. The Trail from the Polo Field To Greene Street is well developed and well-maintained. Markers and signs have been added to the property to tell the story of its history, and there are plans to continue development of the historic Kirkwood Inn property. The property is the location of General Greene's right flank of the Continental army (the Virginia Line) in the Battle of Hobkirk Hill.

5

Wateree River Veterans Park - New Pier and Boat Ramp

Construction of a new boat ramp started on Jan 6, 2025. The new ramp will serve motor boats and a separate entry point will remain for paddlers. This ramp is in addition to the current DNR ramp on the other side of the Highway 1 bridge.

6

Black River Rd Multi-Use Trail Project

The Black River Road project includes widening the road and adding a 10' wide multiuse trail. The project was funded by the Santee-Lynches Council of Governments and is managed by DOT. Land acquisition is in progress and Milestones are on track and a 2 year construction project is expected to complete in Mid 2028.



7

Woodward Park Expansion

Upgrades to Woodward Park were approved by County Council in 2023 and funded with \$10 Million from Kershaw County, Health Service District of Kershaw County, and MUSC. The most recent plan will include additional walking trails and an additional connector to Scott Park.



8

Bolton Branch Trail – Ehrenclou to River

This project is to create a walking trail along Bolton Branch that will connect Ehrenclou Rd with Camden Environmental Park and the Wateree River. The path can potentially use the city's easement for water and sewer utilities. The developer is on board with the concept. Coordination between city, county, and the two other property owners will be required to make this happen.

9

Bethune – New park property

The town of Bethune recently acquired an unused school building and 50+ acres of property. The mayor and council have discussed the possibility of developing trails on this property including nature trails in a wooded section of the property. The town is currently seeking outdoor recreation grant funding for trails, and development of their municipal complex on the same property.

10

Wateree River Veterans Park – Nature Trail Improvements

There are two significant trails at Wateree River Veterans Park: the handicapped-accessible paved trail and the nature trail. The nature trail is a wooded trail that follows Twenty-five Mile Creek, the edge of the Wateree River, and returns to the parking area. KC Trails advocates devoting the resources needed to keep the nature trail safe and properly maintained.

11

Goodale State Park – Trail Expansion

Goodale State Park has announced plans to develop 2.4+ miles of walking trails and trail loops on the north side of the park's property. Park Director John Wells led over 200 walkers on a preview of those trails at the park's First Day Hike on January 1, 2025.



12

Camden Environmental Park – Improved Signage and Promotion

Camden Environmental Park is an environmental jewel located on the banks of the Wateree River. It is a mecca for all types of birds and it has a very modern and functional launch for kayaks and canoes. There is limited signage to let the people know that the park exists. KC Trails recommends that the city improve signage at the park entrance and near the corner of Ehrenclou Drive and York Street.

13

Lynches River Paddle Trail

The Town of Bethune would like to see development of a River Trail on the Lynches River. The initial goal is to have put-ins and take-outs at the bridges for Hwy 903, Hwy 1, & Hwy 265, and Old Stagecoach Rd.

14

Camden Battlefield Trail Development

Under the direction of Historic Camden, plans are underway for a well marked 1 mile historic interpretive trail with historical markings along the path. This trail will be on both the east and west sides of Flat Rock Rd. Plans are to continue expansion of trails on the 800 acre property in the future.

15

Camden Rail Trail

It has long been a dream of many in Kershaw County to repurpose the old railroad track that goes parallel to Hwy 521 from below I-20 northward for many miles. This trail potentially connects Central Carolina College with Historic Camden and continues north to the Camden Battlefield 8 miles north of town. This trail in its entirety or in sections deserves consideration.



16

Wateree River Trail – Veterans Park to Lake Wateree Dam

The potential exists to develop a trail from Wateree River Veterans Park to the Lake Wateree dam on the Lugoff side of the Wateree River. Power lines currently connect the park with the dam.

17

Kendall Lake Swamp Trail

Kendall Lake Park is a 51 acre Camden city park close to downtown Camden. There is potential for a 1 mile trail through the wetlands, starting at the boat ramp and heading southeast through the woods, and passing a historical cemetery and ending at the community center.

18

Camden City Bike Lane Improvements

KC Trails advocates improved signage for drivers and improved maintenance of existing bike lanes. Many of the city's bike lanes are in need of paint and many are covered in dirt and gravel. Improved markings will increase awareness for drivers and provide a safer place to ride a bike in Camden. KC Trails promotes increased bike usage throughout the City of Camden in a safe environment.



19

White Pond in Elgin

White Pond is a geologically significant body of water located just outside the town limits of Elgin. The pond sits on an undeveloped 500 acres, and was created by an exploded asteroid or meteor and many believe it provides evidence of a major extinction event that took place about 1200 years ago.

20

Buck Creek / YMCA Trail in Lugoff

In Lugoff, there is a stretch of green space along Buck Creek, between Hwy 1 and Lachicotte Rd. There are currently plans for a YMCA on the property adjoining Buck Creek. KC Trails advocates exploring development of a trail along Buck Creek both north and south from the YMCA property.



21

Wateree River - Boykin Access

When paddling south from Camden Environmental Park, it has been suggested that a potential good take out point would be Swift Creek near The Mill Pond restaurant. This project would be to get permissions and explore the navigability of Swift Creek for put in and take out.

22

Wateree Outdoor Center - Kayak & Canoe Shuttle

The goal of this project is to find a provider of canoe and kayak shuttle services to work out of Camden Environmental Park or Wateree River Veterans Park to provide Dam to Camden and Camden to Boykin shuttle service.

23

Walking Trails at Parks - Camden City Parks and County Parks

Boykin Park, Kirkwood Park, & Rectory Square parks, all in the city of Camden, are parks that might be candidates for walking paths. Walking paths would provide local residents a safe place to walk, away from traffic. The Mt. Pisgah area has an old ball field that residents would like to see developed into a safe place to walk.

24

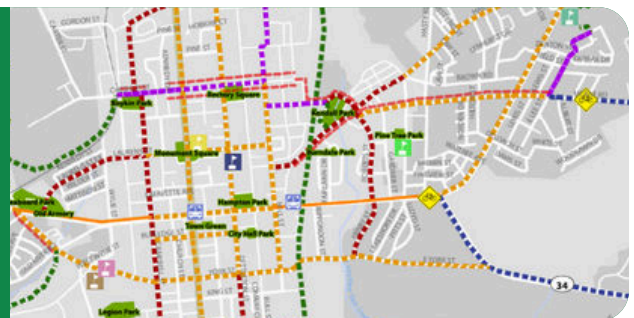
Elgin Community Center at Potter Park

The Elgin Community Center will serve as a gathering place for the community and is expected to draw more traffic to the walking trail and playground at Potter Park.

25

2013 Bicycle Pedestrian & Greenways Plan

Develop an updated plan and recognize progress to the Kershaw County 2013 Bicycle, Pedestrian, and Greenways Plan.





KC TRAILS

RUN • WALK • BIKE • PADDLE

Connect with us:



www.kctrails.org



[@kctrails](https://www.facebook.com/kctrails)

